

# PREPRUFE<sup>®</sup> 300R/160R membranes

Pre-applied waterproof membranes that develop an adhesive bond to poured concrete to prevent water migration. For use below slabs and on confined basement walls

---

## Description

Preprufe<sup>®</sup> waterproof membranes are composite sheets comprising a robust HPDE backing, a pressure sensitive adhesive and a trafficable weather resistant coating. Uniquely, the membrane develops a continuous adhesive bond to concrete poured against it. This prevents water migration between the structure and the membrane, substantially reducing the risk of leaks.

## Applications

- Water and vapour proofing all basement grades to BS 8102:2009
- Waterproofing civil engineering sub - structures
- Gas resistance - contributes to methane, carbon dioxide and radon gas protection according to BS 8485 (see section 7.2.4), BRE Reports 211 (radon) and 212 (methane and carbon dioxide). Independent test reports available upon request.

## Independent Assessments

- BBA Certificate No. 97/3325
- Mott MacDonald Special Services Report May 2001
- International Certifications

## Advantages

- **Versatile** - can be used beneath foundation slabs and with single sided formwork systems
- **Seals adhesively to concrete** - a leading technology proven to resist water migration.
- **Lightweight, flexible** - easy to handle and install without special corner pieces
- **No butt joints** - all joints have bonded 'selvedge' or Preprufe<sup>®</sup> Tape overlaps for increased leak protection
- **Inert** - unaffected by groundwater contaminants, ponded water or wet/dry cycling
- **Remains sealed to structure** - even if ground settles
- **Smooth surface membrane** - site contamination easily removed
- **Excellent chemical resistance** - protects structure from salts and sulphate attack
- **Total system** - Full range of GCP hydrophilic and PVC waterstops available for concrete joint protection



---

## Substrate Preparation

Suitable substrates include:

- concrete blinding
- well compacted sand on rolled crushed stone
- rigid insulation
- clay heave boards
- permanent formwork
- removable formwork
- 19 mm plywood
- Hydroduct® drainage sheets
- Adjacent sub-structures

Substrates should be uniform with no gaps or voids greater than 12 mm. Where these exist fill with a material of sufficient strength to support the membrane. All substrates must be free of loose aggregate and sharp protrusions. Where possible, avoid rounded concrete blinding.

In crushed stone applications, it is important to create a sound and solid substrate around “through slab” penetrations to eliminate movement during the concrete pour. Excessive movement may jeopardise the waterproofing integrity around the penetration. Grout around the penetration prior to installing the membrane for stabilisation.

The surface does not need to be dry, but standing water must be removed. Substrates must have sufficient rigidity not to move during the concrete pour. Boarded substrates must be close butted to provide support and not more than 12 mm out of alignment.

## Installation – General

### Tools /materials required:

- Heavy duty lap roller
- Stanley /Utility knives
- Tape measure
- Cotton cleaning cloths
- Plywood or similar cutting board
- Thin metal straight edge
- Chalk line
- Broom
- 2 metre long pipe or heavy broom handle
- Spiral mixing paddle for Bituthene® LM
- Round nose trowel or spatula
- Required protection and/or drainage boards and other ancillary products

Preprufe® membranes are supplied in rolls 1.2m wide with a self adhesive selvedge on one edge to enable fully bonded laps between adjacent rolls. All other laps must be taped with Preprufe® Tape. Minimum application temperature +5°C.

When installing Preprufe® membranes in cold or marginal weather conditions (<13 °C) the use of Preprufe® Tape LT is recommended at all laps and detailing. Preprufe® Tape LT should be applied to clean dry surfaces and the release liner must be removed immediately after application.

## Installation – Horizontal



Place the membrane with the removeable plastic release liner uppermost. End laps should be staggered to avoid a build up of layers. Leave plastic release liner in position until overlap procedure is completed. Accurately position subsequent sheets to overlap the previous sheet 75 mm along the selvedge. Ensure the underside of the succeeding sheet is clean, dry and free from contamination before attempting to overlap. Peel back the plastic release liner from between the overlaps as the two layers are bonded together. Ensure a continuous bond is achieved without creases and roll firmly. On completion of the installation, ensure complete removal of the plastic release liner from all membrane and tape.

## Penetrations

To seal around penetrations such as service pipes, pile heads, lightning conductors, etc. mark and cut membrane tight to the penetration. If the membrane is not aligned within 12mm of the penetration, apply Preprufe Tape lapped onto the membrane and butted tight to the penetration. For pipe penetrations, wrap the pipe with Preprufe Tape. Mix and apply Bituthene LM around the penetrations using a fillet to provide a watertight seal between the Preprufe membrane and Tape. Refer also to Preprufe Standard Details.

## Membrane Repair

Inspect the membrane for damage before installation of reinforcement steel, shuttering and final placement of concrete. Clean by jet washing if required.

Wipe the area with a damp cloth to ensure the area is clean and free from dust, and allow to dry. For minor repairs, apply Preprufe® Tape centrally over the damaged area and roll firmly. For larger repairs use a patch of Preprufe® and tape all edges with Preprufe® Tape. Remove plastic release liner from Tape.

Where exposed selvedge has lost adhesion or laps have not been sealed, ensure the area is clean and dry and overband with Preprufe® Tape and roll firmly.

## Installation - Vertical

Apply the membrane with the thick white plastic face against the substrate. Mechanically fasten the membrane vertically using flat headed fixings appropriate to the substrate. The membrane may be installed in any convenient length. Secure the top of the membrane using a batten or fixing 50 mm below the top edge. Use fixings at typically 600 mm centres to secure the membrane flat against the substrate. Fixings can be made through the selvedge, this allows firmly rolled overlaps, which are covered by the subsequent strip of Preprufe® membrane. Any exposed fixings should be patched with Preprufe® Tape.

Ensure the underside of the succeeding sheet is clean, dry and free from contamination before attempting to overlap. Peel back the plastic release liner from between the overlaps as the two layers are bonded together. Ensure a continuous bond is achieved without creases and roll firmly. On completion of the installation, **completely remove the plastic release liner from all membrane and tape.**

## Removal of Formwork

Preprufe® membranes can be applied to removable single sided formwork, slab perimeter formwork, pile caps, etc. Once concrete is poured the formwork must remain in place until the concrete has gained sufficient compressive strength to develop the surface bond with the Preprufe® membrane.

A minimum concrete compressive strength of 10 N/mm<sup>2</sup> is recommended prior to stripping formwork supporting Preprufe® membranes. Premature stripping may result in loss of adhesion between the membrane and concrete.

## Wall Waterproofing Options

For conventional application to walls after formwork removal use Preprufe<sup>®</sup> 800PA – self adhesive sheet waterproofing membrane. See separate data sheet for further information.

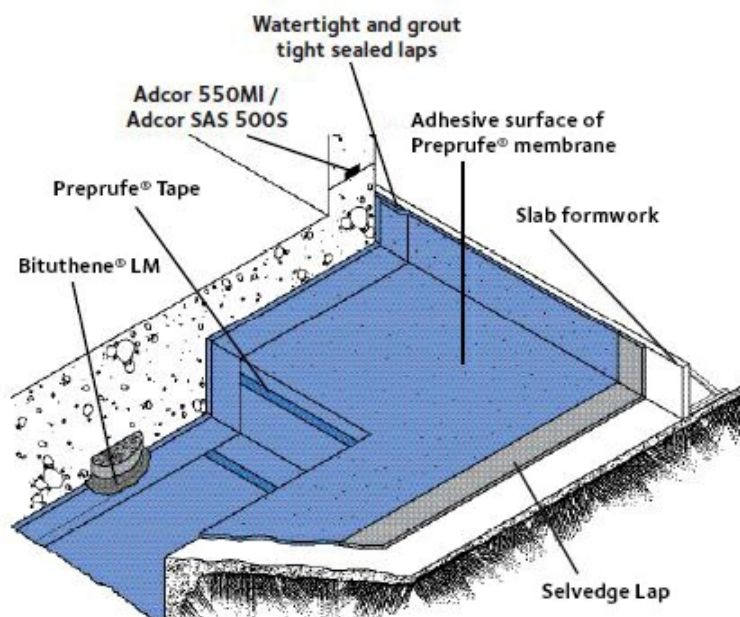
## System Components

- **Preprufe<sup>®</sup> 160R** – for use with concrete slab sections up to 500 mm thickness, or vertically with single sided formwork systems
- **Preprufe<sup>®</sup> 300R** – for use on all horizontal applications. Superior damage resistance
- **Preprufe<sup>®</sup> Tape** – incorporating Preprufe<sup>®</sup> coating for continuous concrete adhesion at taped edges and details
- **Bituthene<sup>®</sup> LM** – high performance liquid membrane for detailing terminations at pile caps and pipe penetrations
- **Adcor<sup>®</sup> 500S** – hydro-expansive waterstop for concrete construction joints
- **Adcor<sup>®</sup> 550MI** – hydro-expansive injectable waterstop for added security of concrete construction joints.

## Application

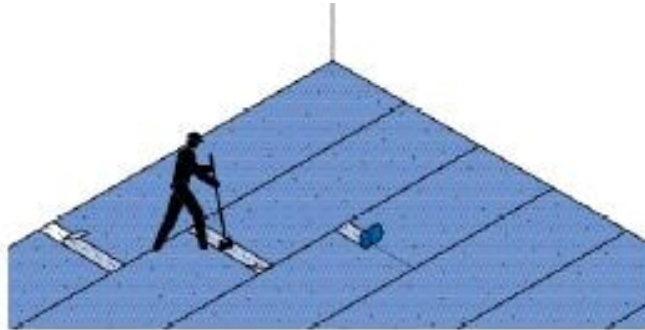
### Material Storage

Sequence deliveries to avoid delays, but minimise on-site storage. Select a safe, covered secure location for material storage. Store materials for each day's use in a location that won't require movement a second time. Do not double-stack pallets of waterproofing on the job site. Store protection boards flat and off the ground. Provide cover on top and all sides.



Details shown are typical illustrations only and not working drawings. For assistance with working drawings and additional technical advice please contact GCP Technical Services.

## End Laps and Cut Edges



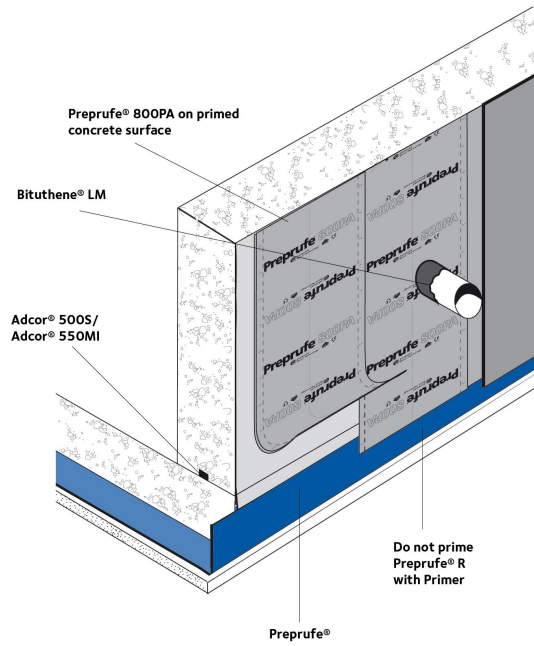
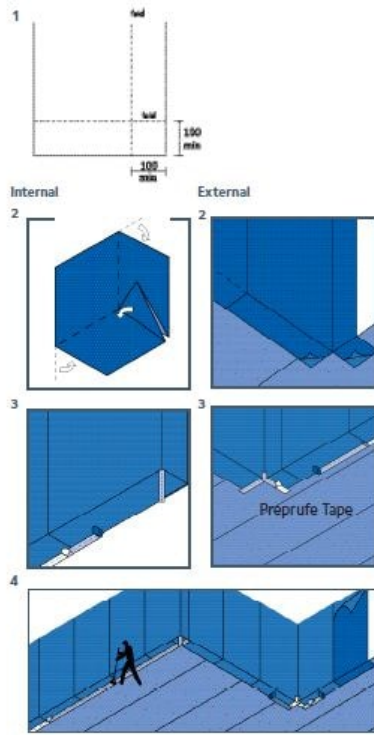
Overlap all roll ends and cut edges by a minimum 75 mm and ensure the area is clean and free from contamination, wiping with a damp cloth if necessary. Allow to dry and apply Preprufe® Tape centred over the lap and roll firmly. Refer also to Preprufe® Standard Details.

## Internal & External Corners

Internal & external corners should be formed as shown in the diagrams below. Ensure that all laps are 100 mm minimum, taped with Preprufe® Tape and well rolled. Crease and fold the membrane to ensure a close fit to the substrate profile.

### Corners

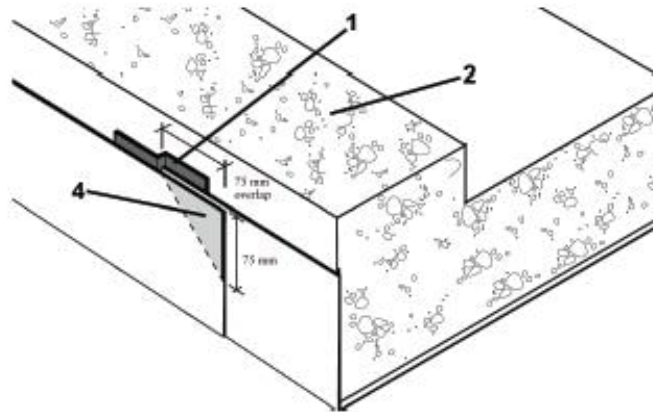
Internal and external corners should be formed as shown in the diagrams returning the membrane a minimum of 100 mm and sealing with Preprufe® Tape. Ensure that the apex of the corner is covered and sealed with Tape and roll firmly. Crease and fold the membrane to ensure a close fit to the substrate profile and avoid hollows.



## Preprufe Preparation for Preprufe® 800PA

Inspect the Preprufe® membrane around the perimeter edge of the concrete slab. Identify any exposed non-selvedge overlaps in the Preprufe® membrane. To ensure continuity of the fully bonded system, carefully cut and remove a 75 mm triangular piece of the top flap of Preprufe® membrane only, as shown shaded in the standard detail, Slab Perimeter Detail - non selvedge lap.

### Slab Perimeter Detail



1. Taped non-selvedge lap
2. Poured Concrete
3. Remove formwork
4. Cut and remove shaded piece before applying Preprufe® post applied membrane

### Ancillary Products

**Adcor® 500S** – Hydrophilic waterstop for construction joints and pipe entries.

**AT System** – Co-extruded PVC waterstops for movement joints. Bituthene® Protection Board – protection against damage from backfill.

### Limitations of Use

- Do not use Preprufe® between concrete infilled hollow block walls
- It is recommended that concrete be poured within 56 days (42 days in hot climates) of application of the membrane.

### NBS Specification

Refer to clause J40 297.



## Health and Safety

There is no legal requirement for a Safety Data Sheet for Preprufe<sup>®</sup> membrane. For health and safety questions on this product please contact GCP. For Bituthene<sup>®</sup> LM read the product carton and Safety Data Sheet (SDS) before use. Users must comply with all risk and safety phrases. SDS's can be obtained from GCP Applied Technologies.

### SUPPLY

| Preprufe <sup>®</sup>          | 300R     | 160R     | Tape LT* or HC* |
|--------------------------------|----------|----------|-----------------|
| Thickness<br>(nominal) (mm)    | 1.2      | 0.8      | 0.7             |
| Roll size (m)                  | 1.2 x 30 | 1.2 x 35 | 100mm x 15      |
| Roll area (m <sup>2</sup> )    | 36       | 42       |                 |
| Roll weight (kg)               | 50       | 42       | 2               |
| Minimum edge/<br>end laps (mm) | 75       | 75       | 75              |

\*LT denotes for temperature between -4°C and +30°C

\*HC denotes for temperature between +10°C and +40°C

### ANCILLARY PRODUCTS

|                           |                |
|---------------------------|----------------|
| Adcor <sup>®</sup> 500S   | 6 x 5m rolls   |
| Adcor <sup>®</sup> 550MI  | 8 x 5m rolls   |
| Bituthene <sup>®</sup> LM | 5.7 litre pack |

### TYPICAL PROPERTIES

|   | 300R       | 160R       |
|---|------------|------------|
| Thickness of carrier sheet (mm)<br>DIN V 20000-202  | 0.8 ± 0.05 | 0.4 ± 0.04 |
| Adhesion to concrete (N/mm)                         | 2.88       | 2.88       |
| Shear strength of joints (N/mm)<br>EN 12317-2       | 9.52       | 9.52       |
| Hydrostatic head resistance (m)<br>ASTM D 5385 mod. | > 70       | > 70       |
| Puncture resistance (N)                             | 990        | 445        |

DECLARED VALUES ACCORDING TO EN 13967

| Property   | Declared Value |               | Test Method | Property   | Declared Value                                    |   | Test Method                                |
|--|----------------|---------------|-------------|--|---|---|--|
| Preprufe®  | 160R           | 300R          | Method      | Preprufe®  | 160R  | 300R  |  |
| <b>Visible defects</b> - MDV                       | None           | None          | EN 1850-2   | <b>Joint strength</b> (N/50mm) - MLV   | ≥ 480   | ≥ 850   | EN 12317-2                                 |
| <b>Straightness</b> - MDV                          | Pass           | Pass          | EN 1848-2   | <b>Water vapour transmission</b> ( $\mu = sD/d$ ) - MDV                      | 950.000 ± 30%                                     | 950.000 ± 30%                                       | EN 1931 Method B                           |
| <b>Length</b> (m) - MDV                            | 35.15 ± 0.25   | 30.15 ± 0.25  | EN 1848-2   | <b>Durability of water tightness against ageing/ degradation</b> (at 60 kPa) | Pass  | Pass  | EN 1296<br>EN 1928<br>Method B             |
| <b>Thickness</b> (mm) - MDV                        | 0.8 ± 0.05     | 1.2 ± 0.08    | EN 1849-2   | <b>Durability of water tightness against chemicals</b> (at 60 kPa)           | Pass  | Pass  | EN 1847<br>Method B<br>EN 1928<br>Method B |
| <b>Width Carrier Sheet</b> (m) - MDV               | 1.206 ± 0.010  | 1.206 ± 0.010 | EN 1848-2   | <b>Compatibility with bitumen</b>  | Pass  | Pass  | EN 1548                                    |
| <b>Mass per unit area</b> (g/m²) - MDV             | 810 ± 50       | 1150 ± 70     | EN 1849-2   | <b>Resistance to static loading</b>  | ≥ 20 - Pass                                       | ≥ 20 - Pass   | EN 12730                                   |
| <b>Water tightness to liquid water</b> (at 60 kPa) | Pass           | Pass          | EN 1928     | <b>Tensile properties - unreinforced sheets</b> (N/50mm) - MLV               | Long <sup>1</sup> ≥ 60<br>Trans <sup>2</sup> ≥ 60 | Long <sup>1</sup> ≥ 110<br>Trans <sup>2</sup> ≥ 120 | EN 12311-2<br>Method A                     |
| <b>Resistance to impact</b> (Al-board (mm) - MLV)  | ≥ 250          | ≥ 400         | EN 12691    | <b>Tensile properties - unreinforced sheets</b> (Elongation %) - MLV         | Long <sup>1</sup> ≥ 4.5<br>Trans <sup>2</sup> ≥ 4 | Long <sup>1</sup> ≥ 4.5<br>Trans <sup>2</sup> ≥ 4   | EN 12311-2<br>Method A                     |

|   |       |       |            |   |   |   |            |
|---|-------|-------|------------|---|---|---|------------|
| <b>Resistance to tearing (Nail Shank)-</b><br>unreinforced sheets (N) - MLV | ≥ 300 | ≥ 450 | EN 12310-1 | <b>Reaction to fire</b><br>(Class; test conditions) | E | E | EN 13501-1 |
|---|-------|-------|------------|---|---|---|------------|

**Footnotes:** 1. Longitudinal - related to the roll direction 2. Transversal - related to the roll direction 3. MDV: Manufacturer Declared Value 4. MLV: Manufactured Limiting Value 5. NPD: No Performance Declared.  
All declared values shown in this data sheet are based on test results determined under laboratory conditions and with the product sample taken directly from stock in its original packing without any alteration or modification of its component parts.



**gcpat.uk | United Kingdom customer service: +44 (0) 1480 478421**

We hope the information here will be helpful. It is based on data and knowledge considered to be true and accurate, and is offered for consideration, investigation and verification by the user, but we do not warrant the results to be obtained. Please read all statements, recommendations, and suggestions in conjunction with our conditions of sale, which apply to all goods supplied by us. No statement, recommendation, or suggestion is intended for any use that would infringe any patent, copyright, or other third party right.

ADCOR, BITUTHENE, and PREPRUFE are trademarks, which may be registered in the United States and/or other countries, of GCP Applied Technologies Inc. This trademark list has been compiled using available published information as of the publication date and may not accurately reflect current trademark ownership or status.

© Copyright 2018 GCP Applied Technologies Inc. All rights reserved.

GCP Applied Technologies Inc., 62 Whittemore Avenue, Cambridge, MA 02140 USA

In the UK, Ipswich Road, Slough, Berkshire, SL1 4EQ, UK

This document is only current as of the last updated date stated below and is valid only for use in the United Kingdom. It is important that you always refer to the currently available information at the URL below to provide the most current product information at the time of use. Additional literature such as Contractor Manuals, Technical Bulletins, Detail Drawings and detailing recommendations and other relevant documents are also available on [www.gcpat.uk](http://www.gcpat.uk). Information found on other websites must not be relied upon, as they may not be up-to-date or applicable to the conditions in your location and we do not accept any responsibility for their content. If there are any conflicts or if you need more information, please contact GCP Customer Service.

Last Updated: 2018-08-24

[gcpat.uk/solutions/products/preprufe-pre-applied-waterproofing-solutions/preprufe-300r160r-membranes](http://gcpat.uk/solutions/products/preprufe-pre-applied-waterproofing-solutions/preprufe-300r160r-membranes)