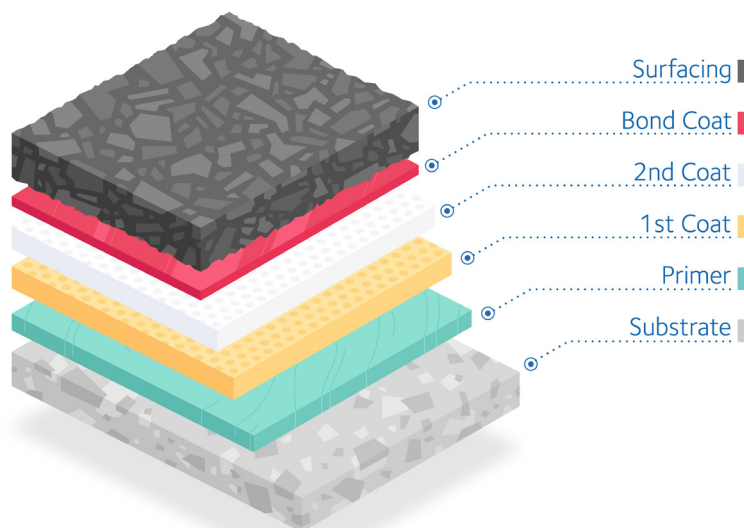


# ELIMINATOR® BOND COAT 4

FOR BRIDGE DECK WATERPROOFING

**Bond Coat 4 is a cold spray-applied tack coat for use with our pioneering ELIMINATOR® bridge deck waterproofing system. This novel technology improves the contact between the membrane and asphalt for enhanced adhesion, reducing the risk of premature surfacing failure.**



## Why use Bond Coat 4?

### HIGHER ADHESION VALUES

Once cured, Bond Coat 4 behaves like a thermoplastic coating. On application of hot asphalt, Bond Coat 4 is thermally activated and melts allowing intimate contact and embedment of the asphalt. The benefits of this are 2-fold:

- Higher surface contact area between membrane/asphalt provides higher shear and tensile adhesion values.
- Less voids at membrane/asphalt interface.

### REDUCED RISK OF PREMATURE FAILURE OF ASPHALT

Bond Coat 4 has excellent adhesion and is suitable for use with a wide variety of asphalt mix designs. This can play a pivotal role in maximising the service life of the asphalt pavement.

### SUITABLE IN HIGH TEMPERATURE ENVIRONMENTS

Bond Coat 4 maintains good adhesion even at higher temperatures.

### QUICK, SAFE AND EASY TO APPLY

Bond Coat 4 is cold spray applied using the same simple equipment as the ELIMINATOR waterproofing membrane. There are no hot works.

# 50

Setting the standard in bridge deck waterproofing for 50 years.



**GCP Applied Technologies (UK) Ltd.**  
Gate St, Dukinfield SK16 4RU  
Phone: 01565 633111  
Technical support: +44 (0) 1480 478421  
Email: info-gb@gcpat.com

Visit us at [gcpat.uk/eliminator](http://gcpat.uk/eliminator)



# ELIMINATOR<sup>®</sup> BOND COAT 4

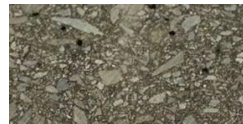
FOR BRIDGE DECK WATERPROOFING

## Bond Coat 4 addresses 3 key challenges

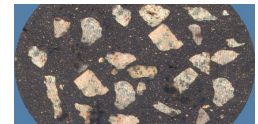
### ADHESION TO DIFFERENT TYPES OF ASPHALT

**Bond Coat 4 has strong adhesion to a variety of different asphalt types.**

This includes asphalt mix designs with larger aggregates and lower bitumen content. Asphalts with larger aggregates also typically have more/larger voids at the interface. The correct choice of bond coat is critical to ensuring strong adhesion with these types of asphalts.



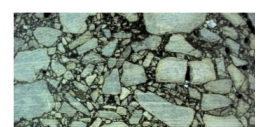
Mastic Asphalt



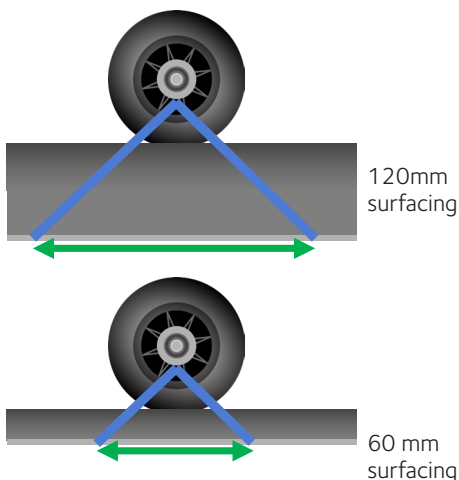
Hot Rolled Asphalt



Stone Mastic Asphalt



Asphaltic Concrete



### THINNER ASPHALT SURFACING

**Stronger adhesion is needed when the asphalt surface is thinner.**

There is a trend towards thinner asphalt surfacing to alleviate dead-loads on bridges. Thinner surfacing concentrates stress on a smaller area, and therefore stronger adhesion is required to withstand the additional stress and maximise the life of the surfacing.

### SUITABLE FOR TROPICAL, TEMPERATE AND COLD CLIMATES

**Bond Coat 4 can be applied in a wide range of climatic conditions and maintains strong adhesion.**

Some bond coats can soften at higher temperatures which can result in shear and tensile adhesion values falling below minimum requirements. In addition, some bond coats can face issues during application in hot climates due to the bond coat becoming "sticky" and being 'picked-up' on wheels of site traffic or pavers.



**GCP Applied Technologies (UK) Ltd.**  
Gate St, Dukinfield SK16 4RU  
Phone: 01565 633111  
Technical support: +44 (0) 1480 478421  
Email: info-gb@gcpat.com

Visit us at [gcpat.uk/eliminator](https://gcpat.uk/eliminator)

